



# RELEASE NOTES

---

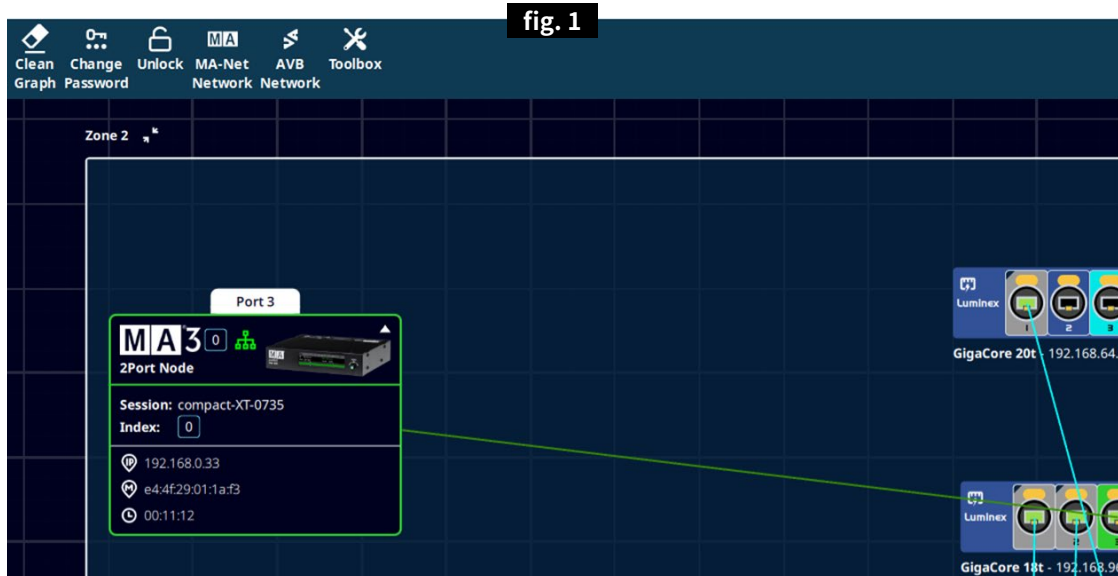
**VERSION 1.7.0**

## DOCUMENT INFORMATION

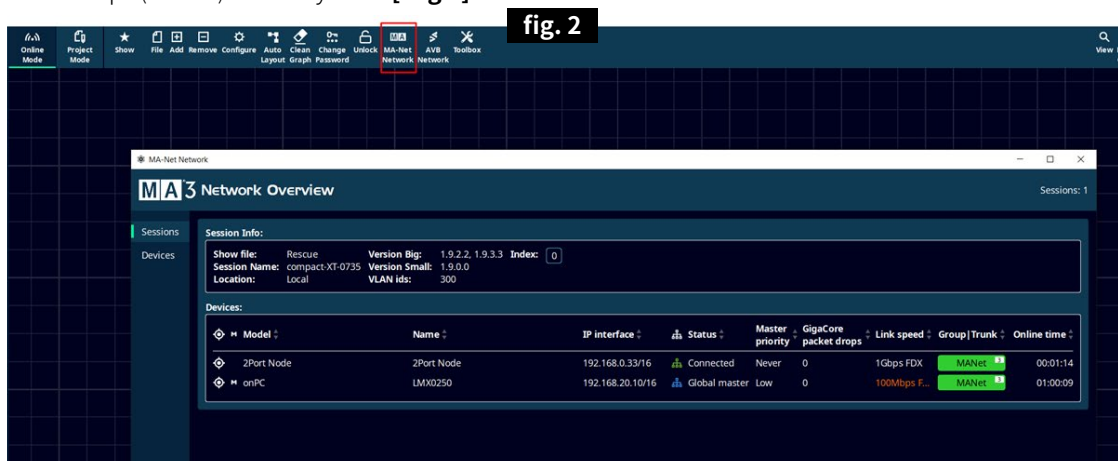
With the release of Araneo v1.7.0 Luminex brings new features, more notably support for MA3 devices that will greatly enhance the monitoring of networks containing these devices. Also a useful batch reset feature that will increase ease of use has been implemented as well as other new features and bug fixes.

## NEW FEATURES:

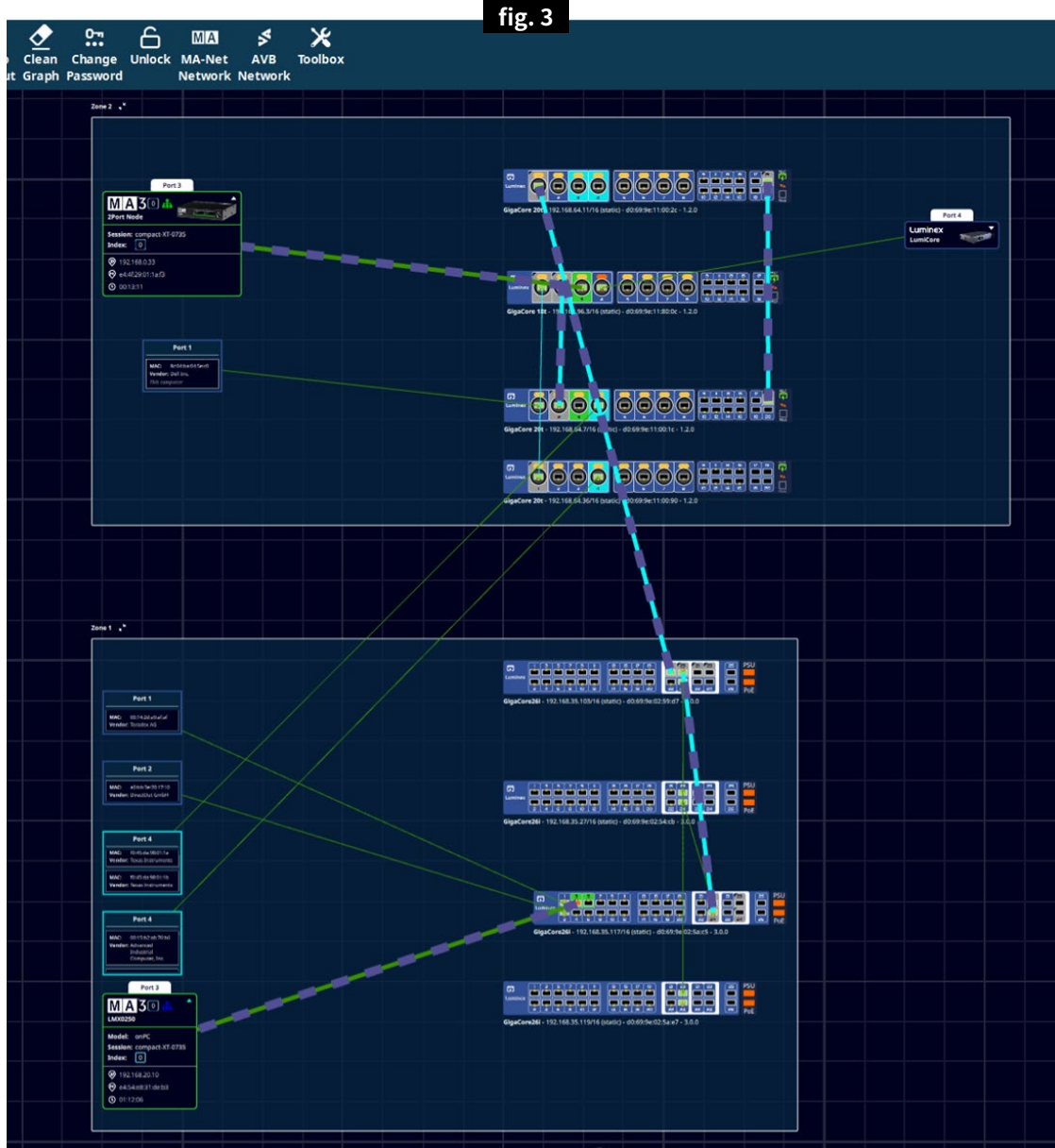
- **MA-Net** - The MA license unlocks a number of useful features for lighting professionals using MA3 devices.
  - MA devices are shown in Araneo as an enriched end-device displaying more information such as the picture, IP address, uptime and session index. [ Fig 1 ]

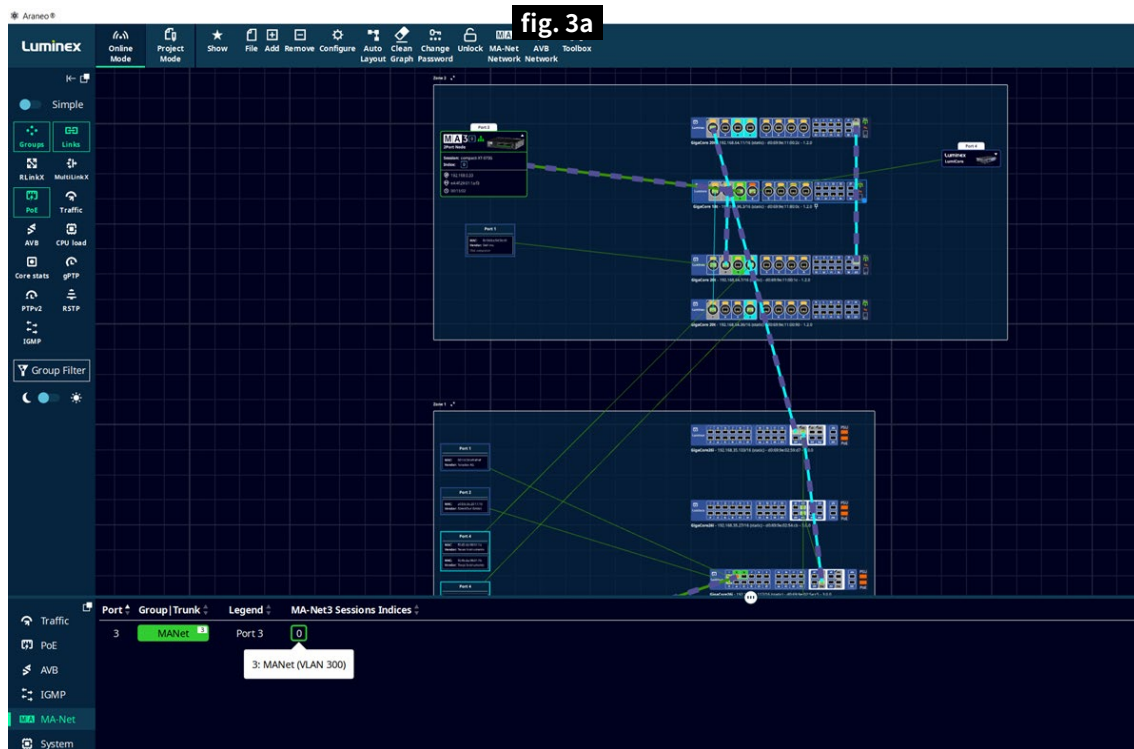


- An MA-Net button enables a window that shows users information about current Sessions or Devices. Session id, name, show file are displayed as well as the devices subscribed in that session and the Groups (VLANs) that they're in. [ Fig 2 ]

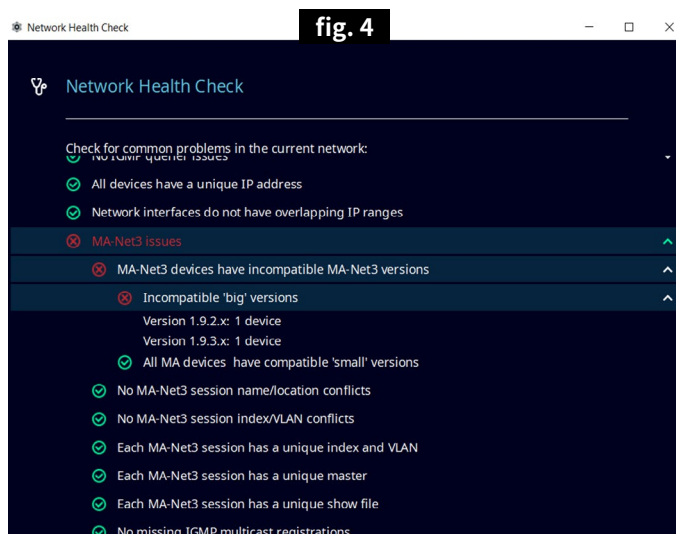


- Hovering over the session index icon found throughout Araneo. A Visual representation of the data flow between the MA devices is shown.[ Fig 3, 3a ]



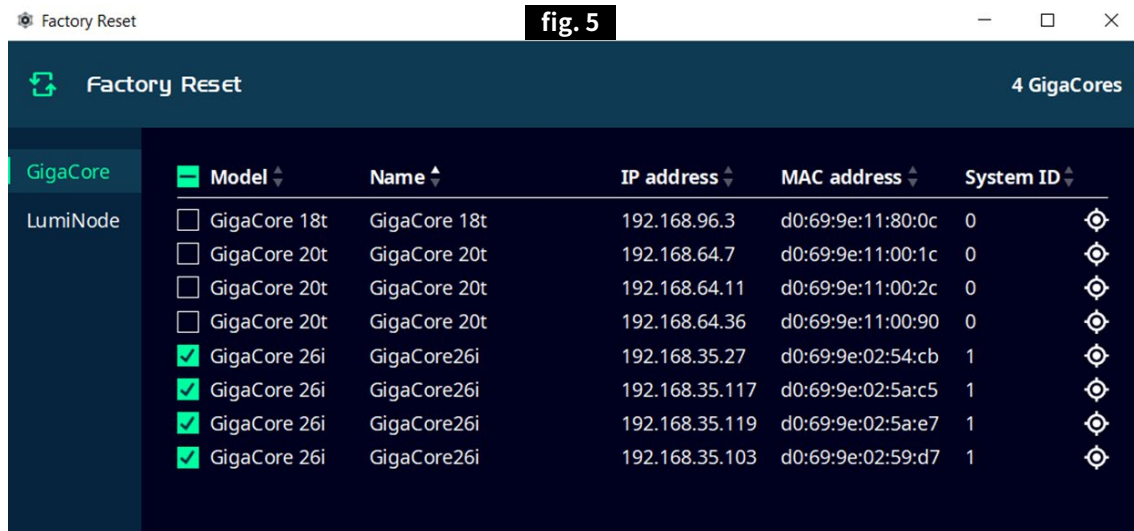


- MA-NET3 related Health Checks have been added to the Araneo Health Check features. [ Fig 4 ]  
Including:
  - Checking if Multicast paths for a specific session are complete up to the IGMP querier in the network.
  - Checking consistency of firmwares, show files and session index / VLAN combination.
- Additional log messages for MA3 transitions in the network are added in the network log window.



### ■ Batch reset.

A Batch reset feature has been added to improve workflow after a firmware upgrade for example. A dialog box allows the user to select individual devices or a batch to factory reset. The dialog window has filter options and a locate button. [ Fig 5 ]

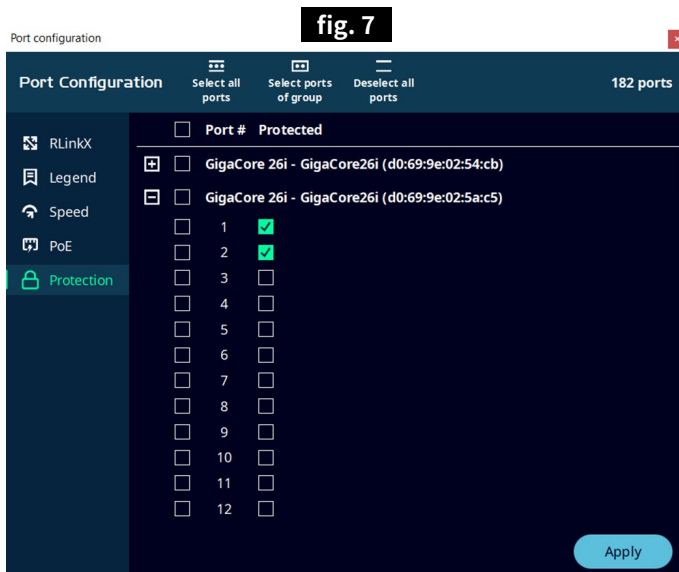


### ■ Compatibility with GigaCore FW v3.0.0.

- AVB is now available in multiple groups. [ Fig 6 ]



- PTPv2 E2E always enabled on all ports
- Port protection has been added on all Gigacore models. [ Fig 7 ]  
This to prevent from accidentally selecting ports and changing their Group (VLAN) assignment.



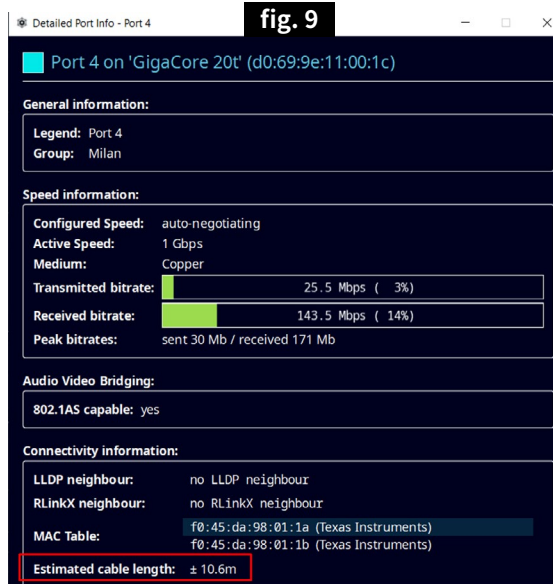
### ■ Support for GigaCore FW v1.2.1

- Full integration of new GigaCore models 20t,18t,16t and GigaCore 16i, 10i. [ **Fig 8** ]

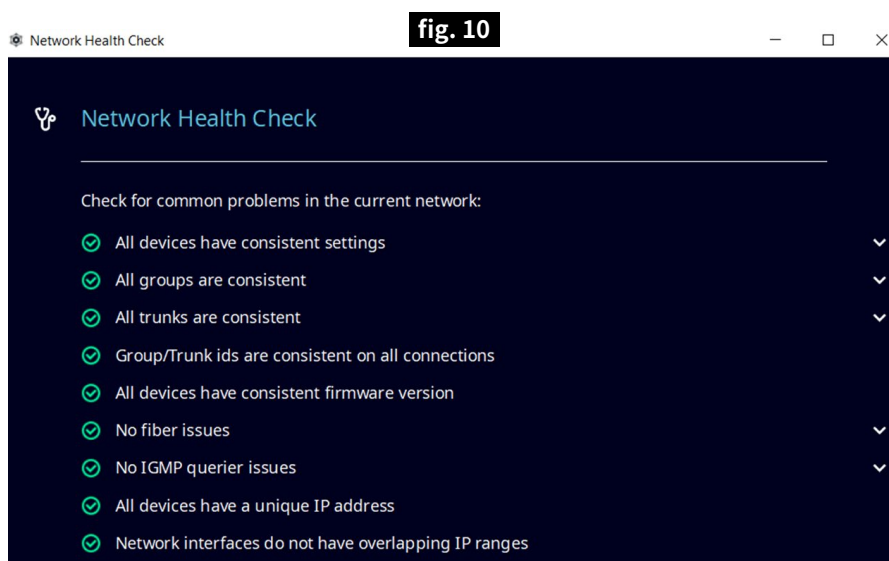


## OTHER NEW FEATURES AND IMPROVEMENTS:

- Araneo now can estimate the cable length of copper connections between GigaCore switches. This will improve status monitoring and make trouble shooting easier in case of suspect connections. [ Fig 9 ]



- Scrolling in the locate window has been made smoother.
- Sometimes the use of screens with different DPI settings would cause issues with dialog boxes, this has been improved.
- Compliance with touch screens has been improved.
- Selecting devices in a pinned zone by drawing a rectangle around them has been improved.
- A health check warning has been added to warn the user for devices in overlapping IP ranges. [ Fig 10 ]





- Passwords can now be loaded from project- into online mode.
- Indication of the grandmaster clock priority has been added to the switch in the online mode when the gPTP info layer is active. [ Fig 11 ]



#### BUG FIXES:

- A bug was fixed where switches would move when a user would draw connections between ports of two switches.
- A bug was fixed where Carriage returns or Enter were accepted but not both.
- An issue was resolved where the firmware versions in the firmware update window were incorrectly sorted.
- Network log messages have been made consistent when plugging or unplugging different LumiNode variants.