

# The Vista.

Think visually, work visually.





# Imagine

Imagine if you could design your lightshow the way you see it—visually.

Imagine if you didn't have to convert your mental picture into a complex series of numbers, then spend ages punching them in. Imagine if you could create lighting effects the way you'd create a painting—with broad brush strokes.


Well finally someone has built a console with you, the lighting designer and operator, in mind. A console that releases your creativity by removing all the hassle and tedious hack work of programming, a console that is fast and easy to use.

That console is the Jands Vista, and it will completely change the way you create your lightshows. Once you've tried it, we reckon you'll never want to go back to the old number-crunching grind.

## So what makes the Vista so different?

The Vista is fundamentally different from existing consoles in three major ways:

- > a totally new approach to the user interface that makes the Vista incredibly easy to use
- > the introduction of a 'timeline' that gives you the complete picture and total control of your lighting events
- > a generic fixture model that takes all the hassle out of changing fixtures.



The Vista. Because it's not about programming, it's about lighting.

# Finally, some control systems



## A user interface that makes sense

We've thrown away the old methods of touch screens, tables of numbers and deeply-embedded menus, and replaced them with a window-based screen that is immediately familiar to anyone who's ever used a modern computer application.

With the Vista you can actually see everything that's happening in your sequence in relation to time.

## Draw your show with the best drawing tool ever invented – the pen

Instead of a touch screen, the T4 and T2 models enable you to draw your show with the best drawing tool ever invented: the pen. This works in much the same way as the mouse that's standard on the S3, except that you use it to draw on the screen just as you'd draw on a page.

Whether you use the pen or the mouse, our simple, easy-to-use visual interface makes the Vista the first console that lets you build your lighting designs visually.

## All the variables in the one place

The Vista puts everything you need on the one screen. No more flicking through menus just to change a colour or a gobo—with the Vista you just point your pen at the colour palette and drag it around to choose the hue you want. If you need more precision you can choose from a huge list of manufacturers' gels, or set the exact CMY values you want—all of this on one screen and in just a few seconds.

## Plan your action over a moving timeline

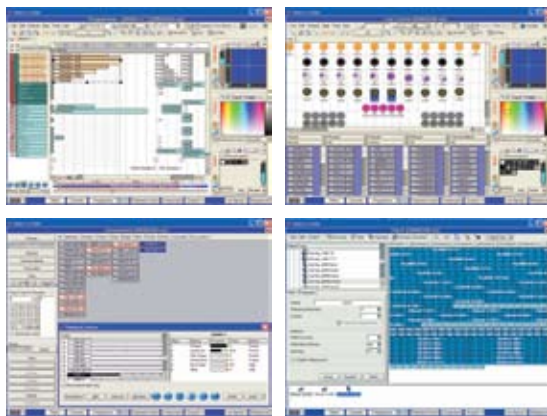
Computer-based audio and video editing tools have made the idea of a 'timeline' instantly familiar: displaying a piece of music or video as a 'clip' moving across the screen over time. The Vista applies this concept to lighting, and the result is an entirely new approach to design and performance.

## See what's really going on for the first time

With the Vista you can actually see everything that's happening in your design in relation to time: when lights come on, when they go off, when they change colour, when they move. Whatever the sequence of events, you can see it all laid out in front of you, and what's more, you can change any of it simply by picking up the pen, selecting an event and moving it around.



# One has built a lighting desk with you in mind.



## Create complex effects in a fraction of the time

Let's say you want to create a colour peel-down: instead of translating this fundamentally visual concept into a sequence of 25 keystrokes then punching them into the keypad, with the Vista you just grab the pen and skew the colour information on the timeline. With a few broad strokes you can create the entire effect, without having to turn your brain into a computer to do it.

## Find and fix problems quickly and easily

No more playing and re-playing entire sequences to find one small problem. With the Vista you simply find the exact spot you want on the timeline, then jump in and make your changes, quickly and easily, without punching a single button.

## Adapt to fixture changes—automatically

One of the most common hassles of a conventional lighting console is having to adapt to changes in fixtures. On most other consoles if you change a fixture type you have to re-program the whole instruction set to match the replacement light, a job that can take hours.

Not on the Vista though: this console records the actual colours, beams and other key details, so when you change a light, the console compares the abilities of the lights and works out how to adapt—even if the new light doesn't have the same feature set. Your show doesn't change, and you don't have to lift a finger.

## What about live performance though?

Ask a lighting operator what they want for a live performance, and you're bound to hear "More faders and user-definable buttons." We've taken this wisdom on board and created the ultimate live performance desk.

With the Vista you can split the fader banks to double your playbacks or combine them to give you dedicated control of timing, chase speed and more. You can even use the encoder wheels to set timing and chase speed, and to move through the timelines of your clips. No more switching from page to page or running out of faders with this console.

## The Vista—a completely new vision of lighting.

The Vista is a radical new approach to lighting design, but it's an approach that's long overdue, an approach that will make your job much easier and more intuitive. By combining the best features of modern user interfaces with tried and tested lighting controls, we've produced a console that works for you, rather than the other way around. The Vista is easy to use and quick to master.

Be warned though: once you try it, you'll wonder how you ever put up with the endless hassle of your old console.

# The Vista T4.

Everything you need, nothing more.



The Jands Vista T4 is our flagship lighting console. A superb example of functional design, the T4 is quite simply the most sophisticated, powerful and easy-to-use lighting console available today.

The T4 is the ultimate, all-in-one lighting package. Using the large 15" pen tablet screen, precision encoders, keyboard, and CD-burner, you can create your shows quickly and easily in the console, save them, then run them using a huge selection of live controls.

The T4 provides a massive array of the features that make the Vista such a great live desk: big LCDs, 30 playbacks (20 with faders), four DMX outputs and timecode input, and six encoder wheels for manipulating intensity, position, colour, gobo and beam.

## Control panel (Pen Tablet)

- Wacom 15" Pen-Tablet LCD (1024 x 768)
- 12 user configurable function buttons
- Keyboard and Track pad (extra pointing device)
- Dual Blue, Green, Yellow, Red modifier buttons (Left & Right hand)
- 2 Pen modifier buttons (Left & Right hand)
- Power and Help buttons
- 4 Wacom tablet control / configuration buttons
- Grand Master (rotary) fader and DBO button
- CD/RW — in armrest

## Playback Controls

- 30 Playbacks, 20 with faders and flash buttons, 10 without
- Playbacks feature; Blue / White LCD, Select and Go buttons
- Split mode allows control of up to 80 Clips
- Playbacks can be configured for control of Groups, Presets and more
- Page Up / Down buttons

## Super Playback Controls

- 2 Playbacks with dual faders and buttons
- Go, Pause, Back, Skip Forward, Skip Reverse, Skip to Start, Skip to End buttons
- Utilises LCD and Encoder wheels for display and real time control of playback and other advanced functions

## Programming Controls

- 6 Encoder Wheels with associated Blue / White LCD
- Next / Previous buttons
- 24 context sensitive function buttons



## Technical Specifications

common to T4/T2

|               |                                         |
|---------------|-----------------------------------------|
| Processor     | Pentium® 4 Processor<br>2.8GHz 533MHZ   |
| Memory        | 512 Mbytes (Expandable<br>to 1.0 Gbyte) |
| Hard Drive    | 40GB Ultra ATA Hard<br>drive            |
| Optical Drive | CD-RW Drive<br>(52/24/52X)              |
| Keyboard      | 88 button compact<br>keyboard           |
| Trackpad      | Cirque 2 button<br>GlidePoint® trackpad |

T4 shown with two external 15" displays - not included with console.

# The Vista T2.

Full features, smaller scale.



Sometimes you need all the sophistication and power of a full-scale desk, but you simply don't require that many live controls. If you're working with shows like this, but you still want the ease and sophistication of the Vista T4, the T2 is the model for you.

The T2 offers all the software and hardware features of the T4, but in a highly-portable format. Instead of 30 playbacks, the T2 provides 15 - still plenty of live controls, but designed specifically for shows that have more straightforward control requirements.

There's no need to resort to old-style consoles and the tedium of number-crunching programming simply because the T4 is too big for your requirements. The Vista T2 is the answer.

## Control panel (Pen Tablet)

- Wacom 15" Pen-Tablet LCD (1024 x 768)
- 12 user configurable function buttons
- Keyboard and Track pad (extra pointing device)
- Dual Blue, Green, Yellow, Red modifier buttons (Left & Right hand)
- 2 Pen modifier buttons (Left & Right hand)
- Power and Help buttons
- 4 Wacom tablet control / configuration buttons
- Grand Master (rotary) fader and DBO button
- CD/RW — in armrest

## Playback Controls

- 15 Playbacks, 10 with faders and flash buttons, 5 without
- Playbacks feature; Blue / White LCD, Select and Go buttons
- Split mode allows control of up to 40 Clips
- Playbacks can be configured for control of Groups, Presets and more
- Page Up / Down buttons

## Super Playback Controls

- Playback with dual faders and buttons
- Go, Pause, Back, Skip Forward, Skip Reverse, Skip to Start, Skip to End buttons
- Utilises LCD and Encoder wheels for display and real time control of playback and other advanced functions

## Programming Controls

- 3 Encoder Wheels with associated Blue / White LCD
- Next / Previous buttons
- 12 context sensitive function buttons



## Technical Specifications

common to T4/T2

|                             |                                                           |
|-----------------------------|-----------------------------------------------------------|
| DMX Outputs                 | Four AXR 5-pin sockets<br>DMX-512-1990, RDM compatible.   |
| Ethernet                    | One 10/100 BaseT RJ45, compatible with Art-Net & Pathport |
| USB                         | Three Type A USB2.0                                       |
| Linear Time Code input:     | One 3 pin AXR female socket, 0.5Vpp, 1.2Vpp max.          |
| MIDI in/thru/out            | Three 5-pin 180° DIN sockets                              |
| RS232 COM port              | One DB9 socket                                            |
| External Monitor Outputs    | Two high density DB15 sockets, output resolution 1024x768 |
| Desk lamp out               | Two AXR 3-pin socket, 12V current limited (10W total)     |
| Audio mic/line in, line out | Three 3.5mm jack sockets                                  |
| Trigger in/out              | Two 6.5mm jack sockets 5Vpp                               |
| Power Supply                | Universal 100~240 VAC +/-10%, 47~63 Hz, 10A max           |
| Power Consumption           | 400W maximum                                              |
| Power Factor:               | >85% typical @ 115VAC                                     |
| Mains Connector             | One IEC 3-pin socket                                      |
| Dimensions (w d h)          | T4: 1284 x 638 x 218mm<br>T2: 864 x 638 x 218mm           |
| Weight (Net / Shipping)     | T4: 45 / 77kg<br>T2: 38 / 54kg                            |

# The Vista E2.

For when you just need more controls.



Got a really BIG show to run? The Jands Vista E2 is an extension console you can connect to the T4 or T2 models to give you as many live controls as you can manage with two hands.

## All the live controls of the main console, again

The E2 comes in two models, A and B, that give you the choice of which of the Vista's great features you want. Connecting, via USB, to a Vista T2 or T4, the E2 extends your console, providing either another two playback panels or one playback and one programming panel along with four additional DMX outputs.

## Playback Controls

- A type - 20 Playbacks with faders and flash buttons
- B type - 15 Playbacks, 10 with faders and flash buttons, 5 without
- Playbacks feature; Blue / White LCD, Select and Go buttons
- Split mode allows control of up to 60 Clips (40 for B type)
- Playbacks can be configured for control of Groups, Presets and more
- Page Up / Down buttons

## Super Playback Controls (B Type only)

- Playback with 2 faders and buttons
- Go, Pause, Back, Skip Forward, Skip Reverse, Skip to Start, Skip to End buttons
- Utilises LCD and Encoder wheels for display and real time control of playback and other advanced functions

## Programming Controls (B Type only)

- 3 Encoder Wheels with associated Blue / White LCD
- Next / Previous buttons
- 12 context sensitive function buttons



## Technical Specifications

|                         |                                                             |
|-------------------------|-------------------------------------------------------------|
| DMX Outputs             | Four AXR 5-pin sockets<br>DMX-512-1990, RDM compatible.     |
| USB                     | Four Type A USB2.0,<br>One Type B USB2.0                    |
| Desk lamp out           | One AXR 3-pin socket,<br>12V current limited<br>(10W total) |
| Power Supply            | Universal 100-240<br>VAC +/-10%, 47-63 Hz                   |
| Power Consumption       | 40W maximum                                                 |
| Mains Connector         | One IEC 3-pin socket                                        |
| Dimensions (w d h)      | 442 x 638 x 218 mm                                          |
| Weight (Net / Shipping) | 15 / 20kg                                                   |

# The Vista S3.

All the control surface you need.



The Jands Vista S3 is a compact version of the Vista that puts all the revolutionary features of the full-scale console into a desk you can fit under your arm.

## Compact and powerful

Designed to be used with your desktop or laptop, the S3 is a Vista without the computer hardware components: we provide the software and the control surface, you provide the computer. Install the software, connect your PC to the S3 with a USB cable, and you've got a fully-operational Vista console.

## Playback Controls

- 20 Playbacks, 10 with faders and flash buttons, 10 without
- Playbacks feature; Blue / White LCD, Select and Go buttons
- Split mode allows control of up to 50 Clips
- Playbacks can be configured for control of Groups, Presets and other components
- Page Up / Down buttons

## Super Playback Controls

- Playback with 2 faders and buttons
- Go, Pause, Back, Skip Forward, Skip Reverse, Skip to Start, Skip to End buttons
- Utilises LCD and Encoder wheels for display and real time control of playback and other advanced functions.

## Programming Controls

- 3 Encoder Wheels with associated Blue / White LCD
- Next / Previous buttons
- 12 context sensitive function buttons

## Control Section

- 5 user configurable function buttons
- Blue, Green, Yellow, Red modifier buttons
- Grand Master (rotary) fader and DBO button

## DMX Output

- DMX output channels determined by dongle - sold separately
- 128, 256, 512, 1024, 2048 or unlimited channel versions available



## Technical Specifications

|                            |                                                       |
|----------------------------|-------------------------------------------------------|
| DMX Outputs                | Four AXR 5-pin sockets                                |
| *                          | DMX-512-1990, RDM compatible.                         |
| USB                        | Four Type A USB2.0,<br>One Type B USB2.0              |
| Linear Time Code input:    | One 3 pin AXR female socket, 0.5Vpp, 1.2Vpp max.      |
| MIDI in/thru/out           | Three 5-pin 180° DIN sockets                          |
| Desk lamp out              | One AXR 3-pin socket, 12V current limited (10W total) |
| Power Supply               | Universal 100-240 VAC +/-10%, 47-63 Hz                |
| Power Consumption          | 40W maximum                                           |
| Mains Connector            | One IEC 3-pin socket                                  |
| Dimensions (w d h)         | 642 x 508 x 140 mm                                    |
| Weight (Net / Shipping)    | 16 / 21kg                                             |
| <b>System Requirements</b> |                                                       |
| Windows                    | Pentium 4, 2.8GHz, 512mb ram, Windows XP SP2          |

\* Actual DMX output channels determined by dongle. Software pack, including dongle, must be purchased separately.



## Jands Pty Ltd

Locked Bag 15,

40 Kent Road

Mascot, NSW 2020

Australia

Phone +61 (0)2 9582 0909

Fax +61 (0)2 9582 0999

[www.jands.com.au](http://www.jands.com.au)

[info@jands.com.au](mailto:info@jands.com.au)

## The Vista App

To make it as easy as possible for you to design your shows whenever and wherever you are, Jands offers a software-only version of the Vista. Designed to run on a laptop or desktop computer, the Vista App looks and works in exactly the same way as the console, all that's missing is the desk itself!

## Work from home

With the Vista App you can duplicate all the functions of the Vista lighting console on your personal computer. The Vista App fixture icons even provide a basic visualization of your show, so you can use it to design and build shows at home or on the road.

What's more, when you purchase the full software pack, complete with a USB-port 'dongle', you can have anywhere from 128 to 8192 channels of ethernet output from your PC.

## Best of all, you can try it for free

Yes that's right, you can download the latest version of the Vista software for free from [www.jandsvista.com](http://www.jandsvista.com). So what are you waiting for? Find out what the lighting world is talking about and start designing your winning show, now.

## The Vista App – because we want everyone to enjoy it

Specifications may change. Please contact Jands or your dealer to confirm that you have up to date information.

For further details contact Jands or your local dealer:



[www.jandsvista.com](http://www.jandsvista.com)